



# PLASTICS

# GIMATIC



A business of BARNES GROUP INC

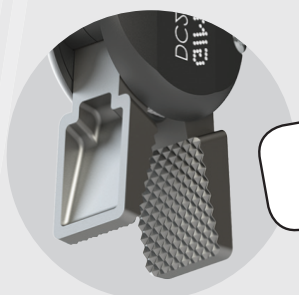
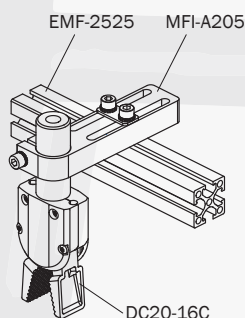
## ULTRALIGHT AND POWERFUL SPRUE GRIPPER DC



**OPTIONAL  
SENSORS**



**SEVERAL  
MOUNTING  
ACCESSORIES**



**STEEL JAWS**



	DC20-16R
Stroke	2 x 15°
Total closing torque at 6 bar	600 Ncm
Cycle air consumption	3.6 cm³
Closing time	0.02 s
Weight	155 g

- Single acting with spring opening
- Several mounting accessories
- Steel jaws
- Plastic-steel-aluminium composite body
- Optional sensors and clamp



Gimatic Srl società unipersonale - Via E.Ferrari 2/4 - 25030 Roncadelle (BS) T. 030 2584655  
E. info@gimatic.com - W. www.gimatic.com - C.F e P.I. IT02969010178

**NEW**



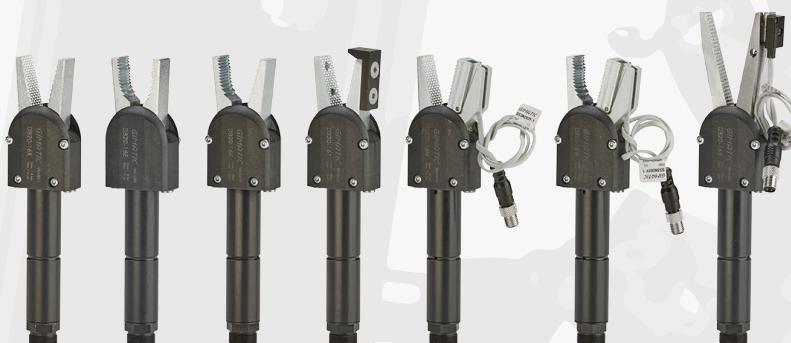
## ENTRY LEVEL, DOUBLE FORCE AND SELF-CENTERING SPRUE GRIPPERS DA-DB-AA SERIES



DA

### 2-jaw self-centering angular pneumatic sprue gripper, series DA

- Single acting with spring opening.
- Several mounting accessories.
- Steel jaws.
- Plastic-steel-aluminium composite body.
- FDA-H1 food-grade grease.



DB

### 2-jaw self-centering angular pneumatic sprue gripper, series DB

- Single acting with spring opening.
- Several mounting accessories.
- Steel jaws.
- Plastic-steel-aluminium composite body.
- FDA-H1 food-grade grease.
- Tandem piston for higher gripping force.
- Optional sensors and clamps.



AA

### 2-jaw self-centering angular pneumatic sprue gripper

- Double acting or spring open (-NO).
- Very high gripping force related to the weight and dimensions.
- Several options for fastening.
- Optional magnetic sensors on piston or on finger sensor probe.

