



PLASTICS

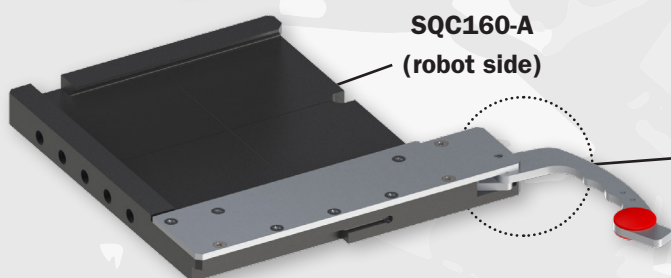
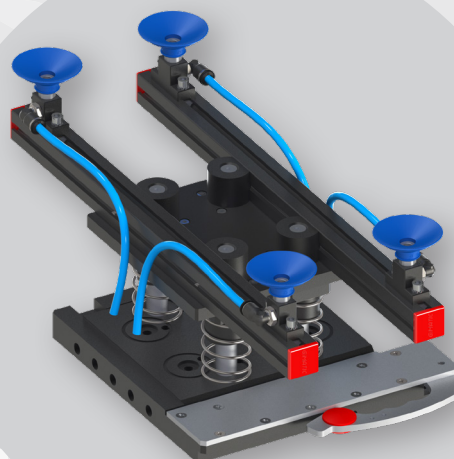
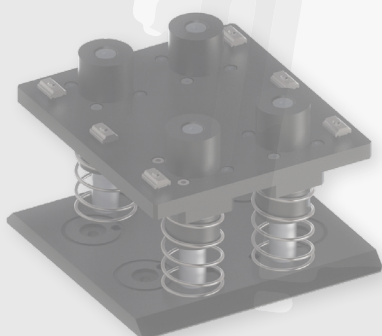
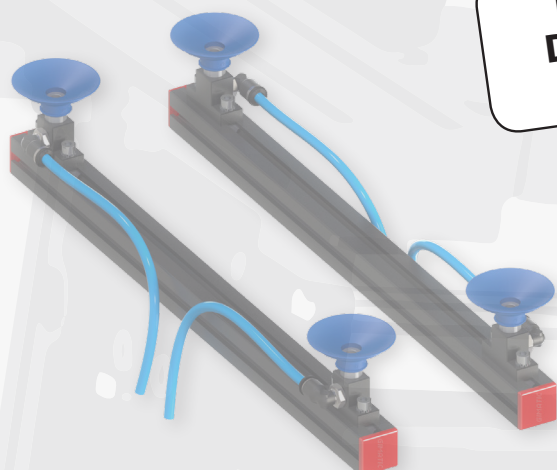


A business of BARNES GROUP INC

ONE HANDLE DOVETAIL QUICK CHANGER SQC

**DIFFERENT
DIMENSIONS
AVAILABLE**

**SIZES
100-160-250**



**SQC160-A
(robot side)**

**ONE HANDLE
+
SAFETY SENSOR**

- It can be used with all the existing standard tool sides.
- It is safer because of the sensor detection of the position.
- It is safer because there is one only handle to close (with two handles you often tighten only one).
- It is easier to open and close.

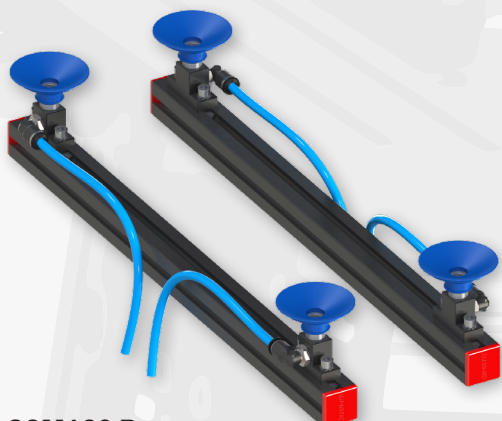


Gimatic Srl società unipersonale - Via E.Ferrari 2/4 - 25030 Roncadelle (BS) T. 030 2584655
E. info@gimatic.com - W. www.gimatic.com - C.F e P.I. IT02969010178

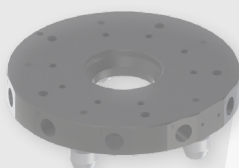
NEW



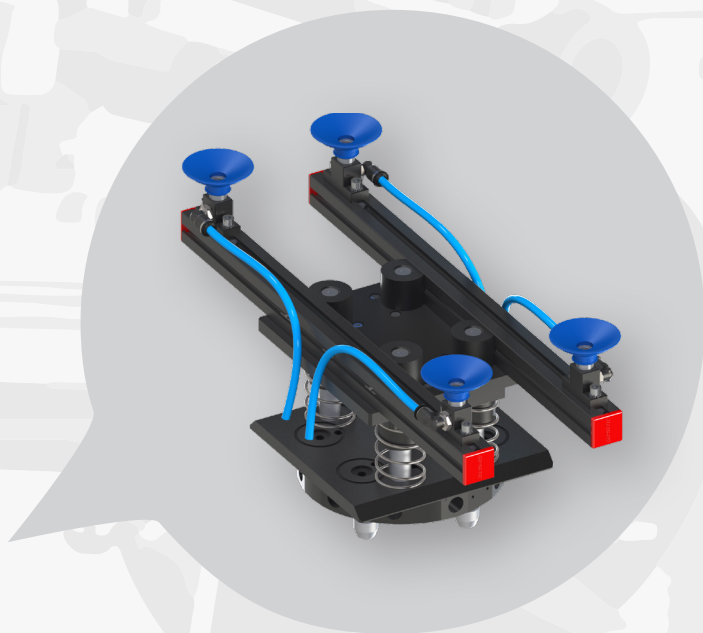
FLOATING PLATE QUICK CHANGER SQM/SQP



SQM160-B

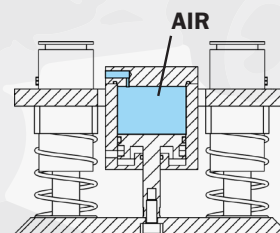
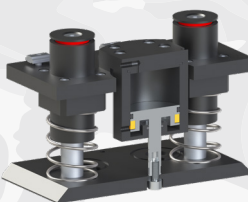


- It is interchangeable with existing standard models.
- It allows a linear compliance of the whole EOAT.
- Different force option.



SOFT RELEASE

- New version with pneumatic double - acting cylinder.



NEW

NEW

